



Fig. 1: 640 Broadway from Blecker Street, Ca. 1910, from "Both Sides of Broadway."



Fig. 2: 640 Broadway from Blecker Street, Ca. 1940, Tax Photo.

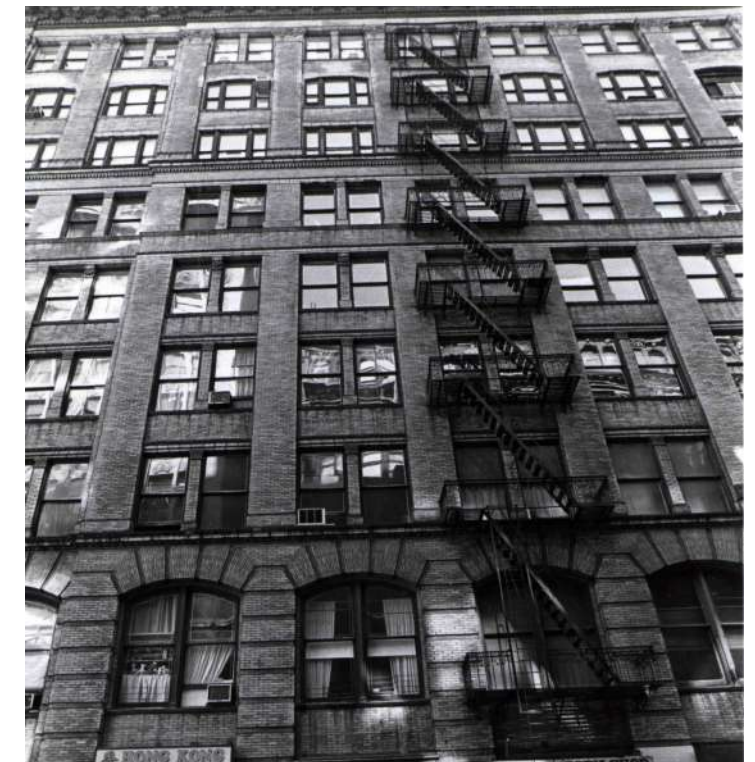


Fig. 3: East fire escape on Blecker Street, ca. 1980, Tax Photo.

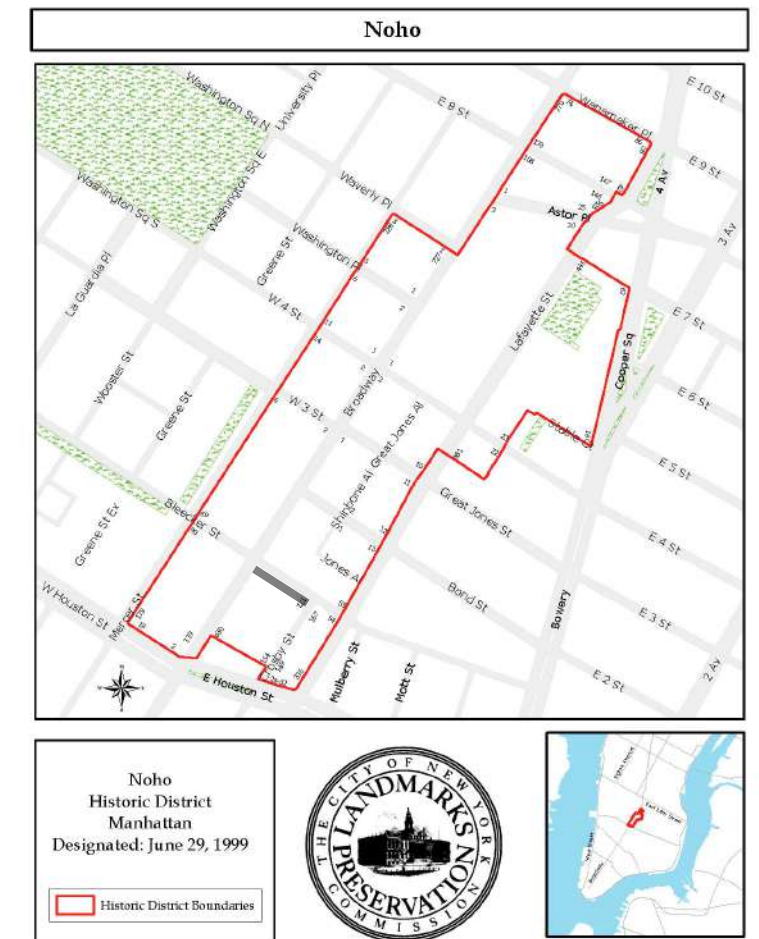


Fig. 4: NoHo Historic District Map

BONE / LEVINE ARCHITECTS

561 BROADWAY, No. 8D NEW YORK, NY 10012
 TEL: 212-219-1038 FAX: 212-226-8056

PROJECT NAME

640 BROADWAY - FIRE ESCAPE EXTENSION
 LPC-19-23694

DRAWING TITLE

HISTORIC SITE CONDITIONS AND LOCATION

DATE	APRIL 17, 2018	SCALE	NTS	LPC-01
REVISIONS				
		DRAWN BY	DG	



Fig. 5: North (Bleecker Street) Elevation

BONE / LEVINE ARCHITECTS 561 BROADWAY, No. 8D NEW YORK, NY 10012 TEL: 212-219-1038 FAX: 212-226-8056	640 BROADWAY - FIRE ESCAPE EXTENSION LPC-19-23694 <small>PROJECT NAME</small>	NORTH ELEVATION WITH PROPOSED EXTENSION ON EAST FIRE ESCAPE <small>DRAWING TITLE</small>	DATE APRIL 17, 2018	SCALE 1/16" = 1'-0" DRAWN BY DG	LPC-02
			REVISIONS		



Fig. 6: 4th floor East fire escape proposed extension as seen from the street.



Fig. 7: 4th floor East fire escape proposed extension compared to existing extensions.

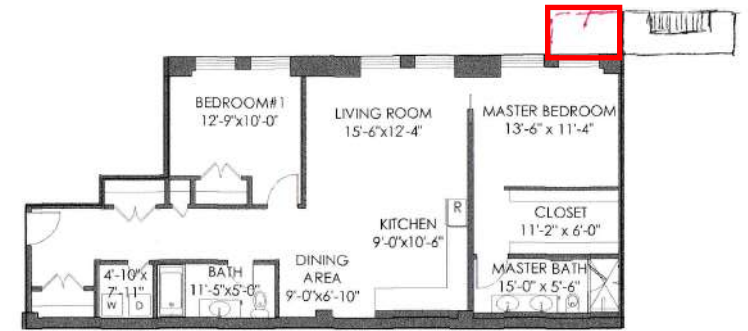


Fig. 8: Plan of unit 4B with proposed location of extension.

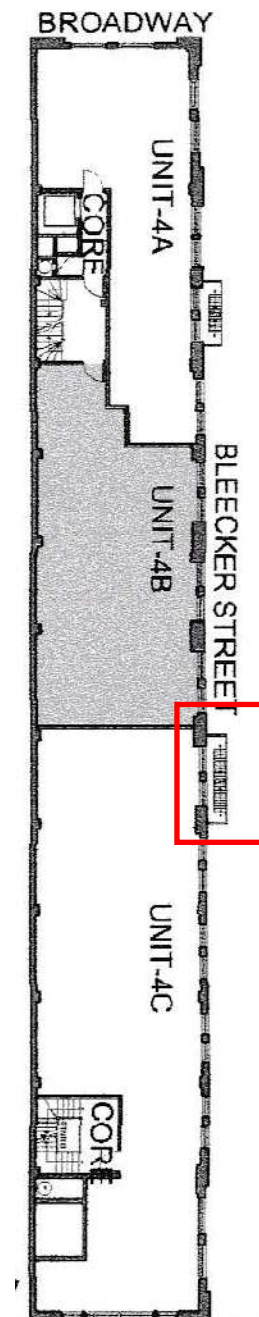


Fig. 9: Plan of 4th floor

BONE / LEVINE ARCHITECTS
 561 BROADWAY, No. 8D NEW YORK, NY 10012
 TEL: 212-219-1038 FAX: 212-226-8056

640 BROADWAY - FIRE ESCAPE EXTENSION
 LPC-19-23694

PROJECT NAME

DIAGRAMS OF PROPOSED FIRE ESCAPE EXTENSION

DRAWING TITLE

DATE	APRIL 17, 2018	SCALE	NTS	LPC-03
REVISIONS				
		DRAWN BY	DG	